

IB-54/IB-55

Installation guide

2024.07
5M4GEEN00

Contents

1	Preface	1
	Preface	2
	Overview of Installation Procedure.....	3
2	The products that this item can be installed	4
	The products that this item can be installed.....	5
	Monochrome A4/A3 printer	8
	Monochrome A4 multi-functional product.....	11
	Monochrome A3 Multi functional product.....	14
	Color A3 Multi functional product	18
	Color A4 Multi functional product/Color A4 printer	23
3	Setting password and configuring wireless network	26
	Set a password.....	27
	Configuring the Wireless Settings on the IB-54/IB-55's Web Page.....	29

1 Preface

Preface

This device is a network interface kit for our multifunctional products and the printers. Please read this Installation guide thoroughly so that you understand the correct installation method.

If you cannot find your product in this Installation guide, please contact your service representatives.

IMPORTANT

To use IB-54/IB-55, it is necessary to set an administrator password after installing it.

➔ [Set a password \(page 27\)](#)



NOTE

For machines to be installed by a service person, refer to the service manual.

Supplied parts

- IB-54/IB-55: 1
- IB-54/IB-55 Setup procedure: 1
- Leaflet password operation: 1

Precautions for Handling the device

- The device is delivered in an antistatic bag. To prevent any damage, briefly touch a large metal object to ensure discharge of static electricity before removing the device from the bag.
- Never touch the device's connector section directly with hands.
- When holding the device, avoid contact with the surface of the circuit board.
- Do not apply undue force when installing.

Overview of Installation Procedure

1 Install IB-54/IB-55 in the Multi functional product or the printer with the installation procedure after the next page.



IMPORTANT

Before installing (or removing) the device, be sure to turn off the machine's power and disconnect the power cord plug from the AC outlet.

2 Set a password and configure the wireless network.

➔ [Set a password \(page 27\)](#)

➔ [Configuring the Wireless Settings on the IB-54/IB-55's Web Page \(page 29\)](#)

3 Verify the installation of the device.

Print the status page and confirm the device is installed properly.

Refer to the Operation Guide for the method for printing a status page.

➔ **Operation Guide**



NOTE

The Operation Guide can be downloaded from the Download Center.

<https://www.triumph-adler.com/ta-en-de/customer-service/download-centre>

<https://www.utax.com/en-de/hardware/office-printer-and-mfp/download-centre>

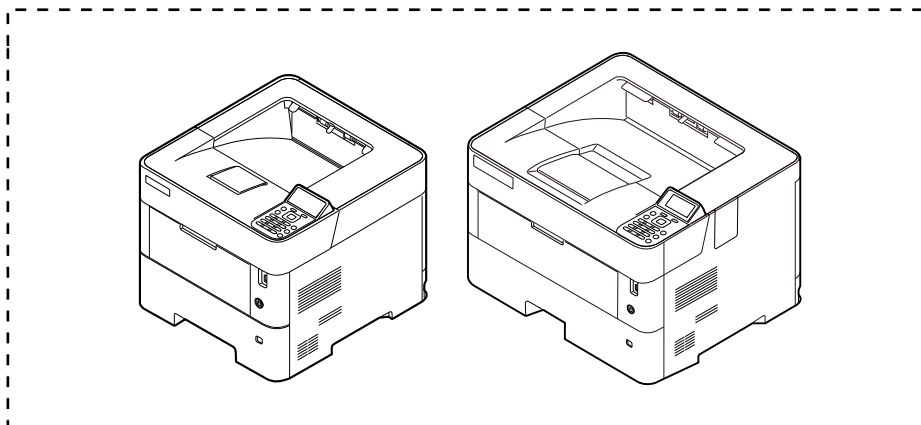
2 The products that this item can be installed

The products that this item can be installed

NOTE

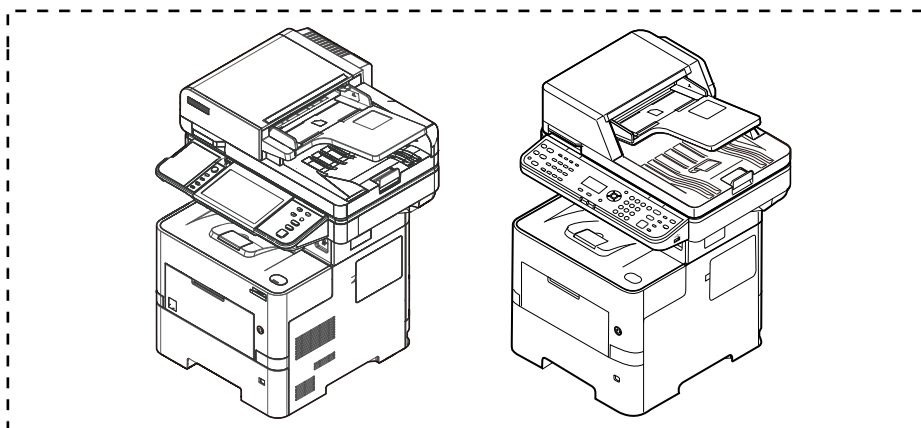
If you cannot find your product in this Installation guide, please contact your service representatives.

Monochrome A4/A3 printer



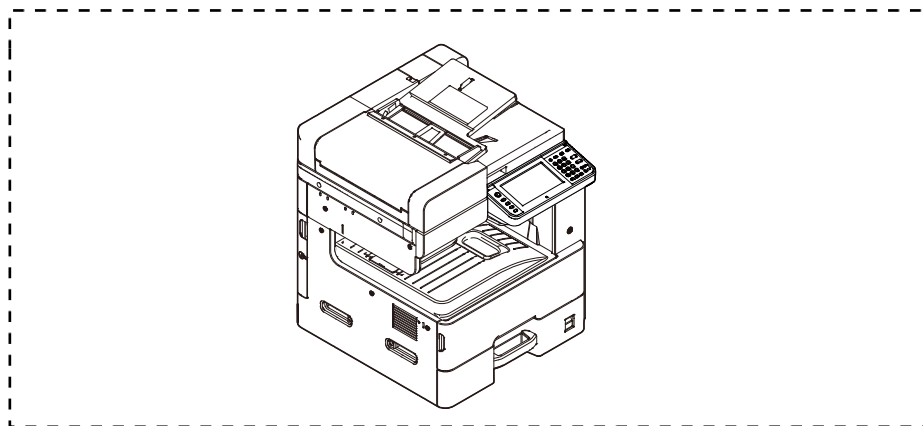
- ➔ [P-5532DN/P-5032DN/P-4532DN \(page 8\)](#)
- ➔ [P-6031DN/P-5531DN/P-5031DN/P-4531DN \(page 8\)](#)
- ➔ [P-6033DN \(page 8\)](#)
- ➔ [P-6034DN/P-5534DN/P-5034DN/P-4534DN \(page 8\)](#)

Monochrome A4 Multi functional product



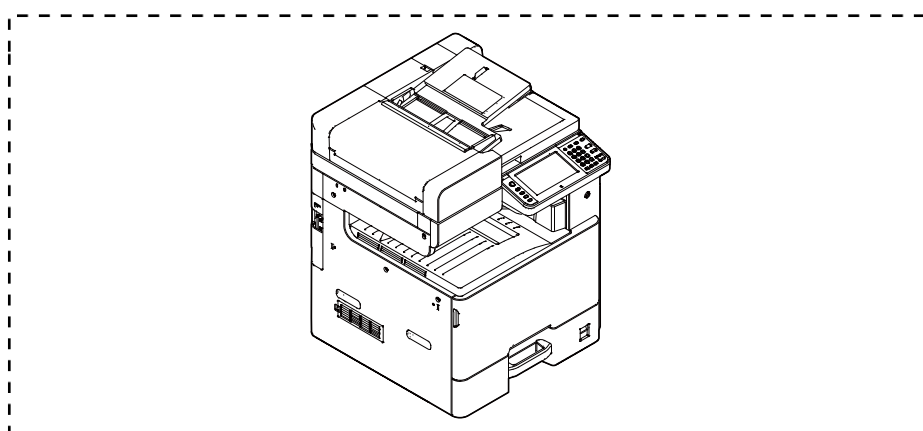
- ➔ [P-6036i MFP/P-5536i MFP/P-4536i MFP/P-4531i MFP/P-4536 MFP/P-4531 MFP \(page 11\)](#)
- ➔ [P-6038i MFP/P-6038if MFP \(page 11\)](#)
- ➔ [P-6039i MFP/P-5539i MFP/P-4539i MFP/P-4532i MFP/P-4539 MFP/P-4532 MFP \(page 11\)](#)

Monochrome A3 Multi functional product



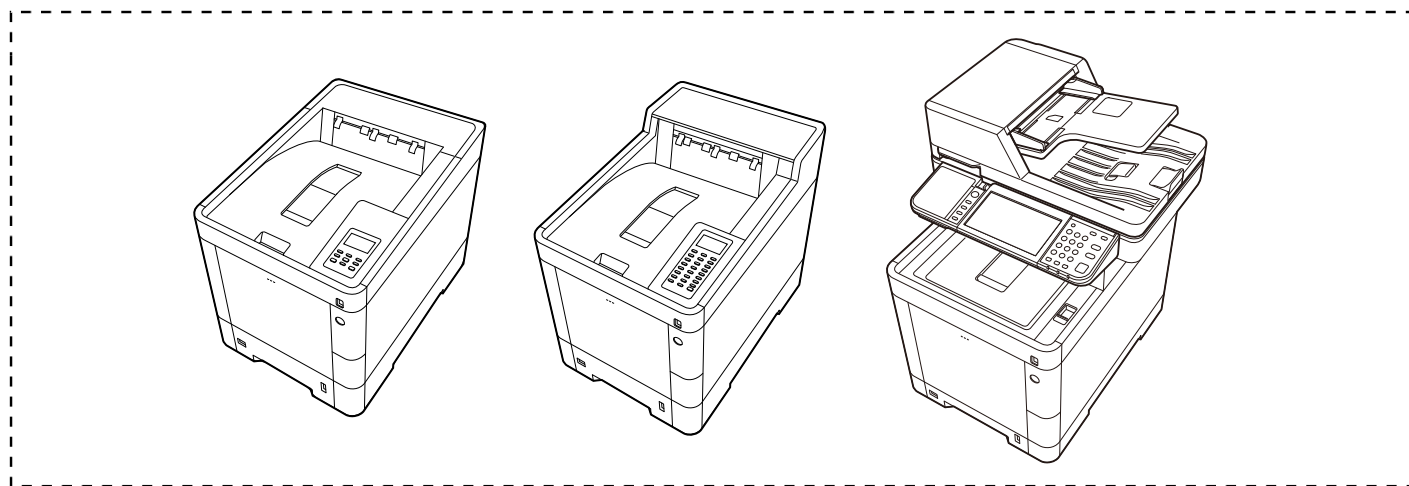
➔ [P-2540i MFP \(page 14\)](#)

Color A3 Multi functional product



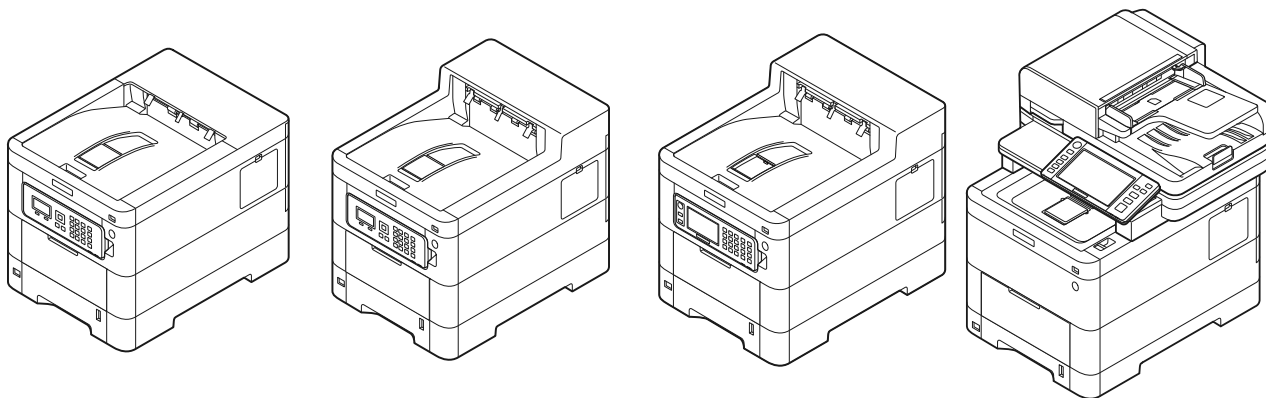
➔ [P-C2480i MFP \(page 18\)](#)

Color A4 Multi functional product/Color A4 printer



➔ [P-C3566i MFP/P-C3562i MFP/P-C3066i MFP/P-C3062i MFP/P-C4072DN/P-C3562DN/P-C3062DN \(page 23\)](#)

➔ [357ci \(page 23\)](#)



➔ [458ci/358ci/P-C4067i MFP/P-C4063i MFP/P-C3567i MFP/P-C3563i MFP/P458ci/P-C4063DN/P-C3563DN \(page 23\)](#)

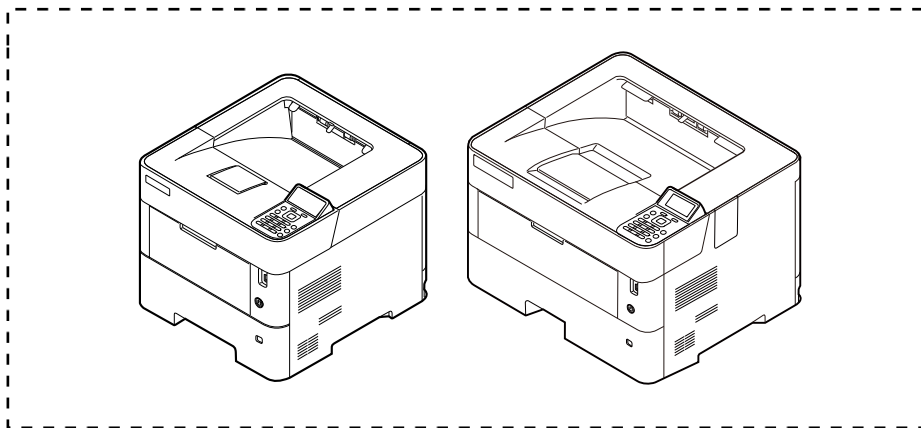
Monochrome A4/A3 printer

P-5532DN/P-5032DN/P-4532DN

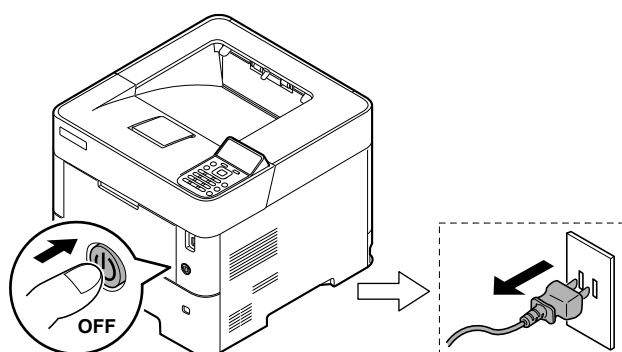
P-6031DN/P-5531DN/P-5031DN/P-4531DN

P-6033DN

P-6034DN/P-5534DN/P-5034DN/P-4534DN



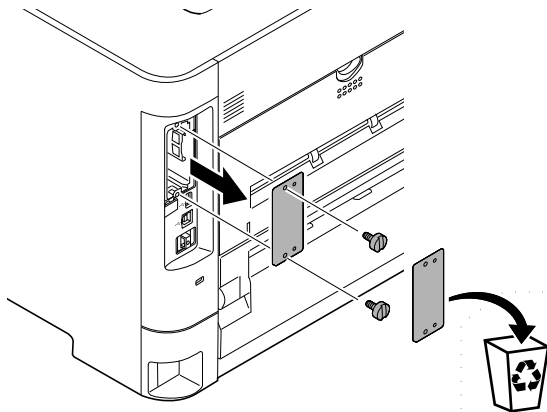
1



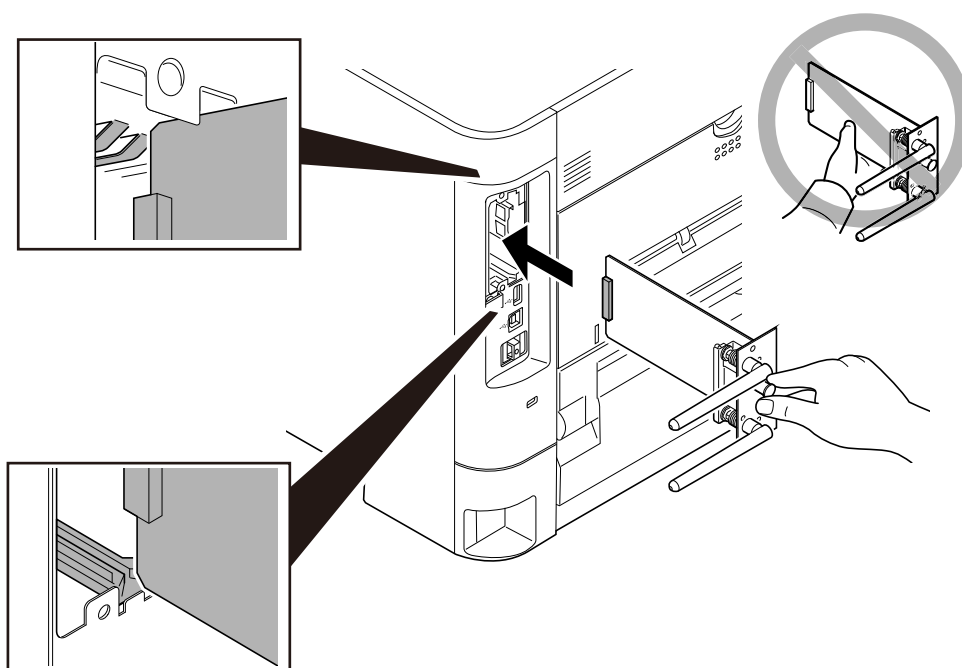
NOTE

Confirm if each indicator is not blinking.

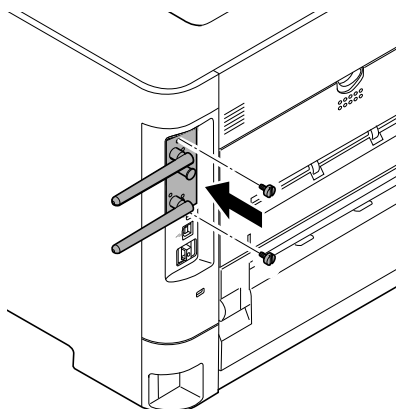
2



3



4



5 Set a password and configure the wireless network.

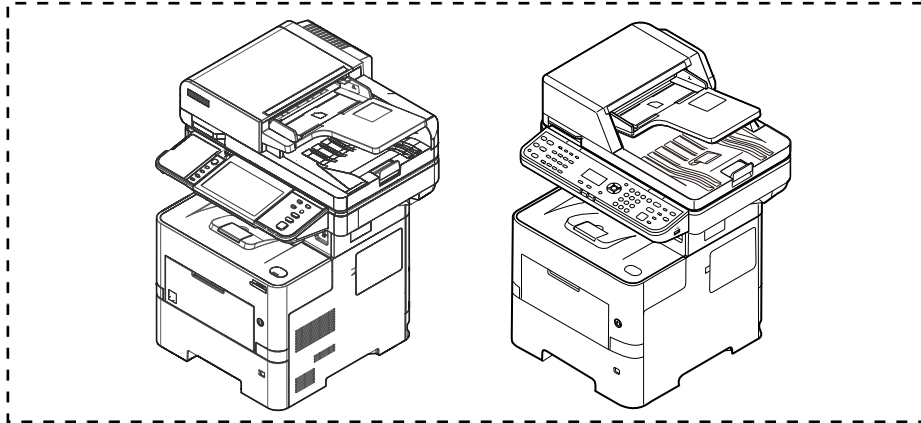
- ➡ [Set a password \(page 27\)](#)
- ➡ [Configuring the Wireless Settings on the IB-54/IB-55's Web Page \(page 29\)](#)

Monochrome A4 multi-functional product

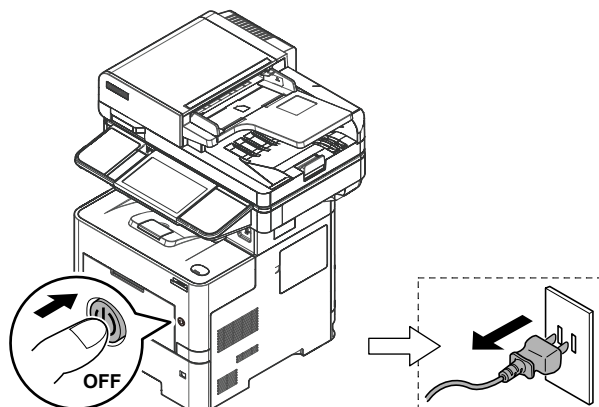
P-6036i MFP/P-5536i MFP/P-4536i MFP/P-4531i MFP/P-4536 MFP/P-4531 MFP

P-6038i MFP/P-6038if MFP

P-6039i MFP/P-5539i MFP/P-4539i MFP/P-4532i MFP/P-4539 MFP/P-4532 MFP



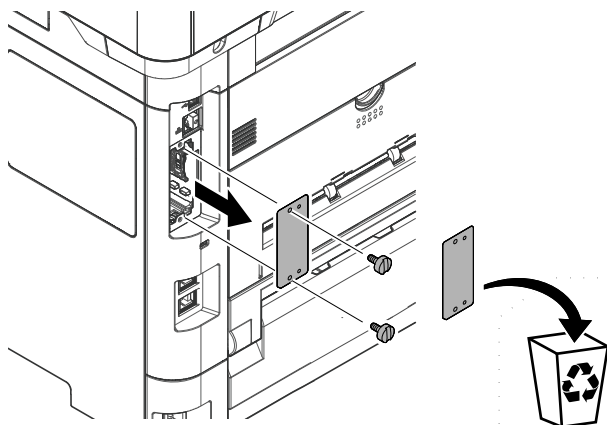
1



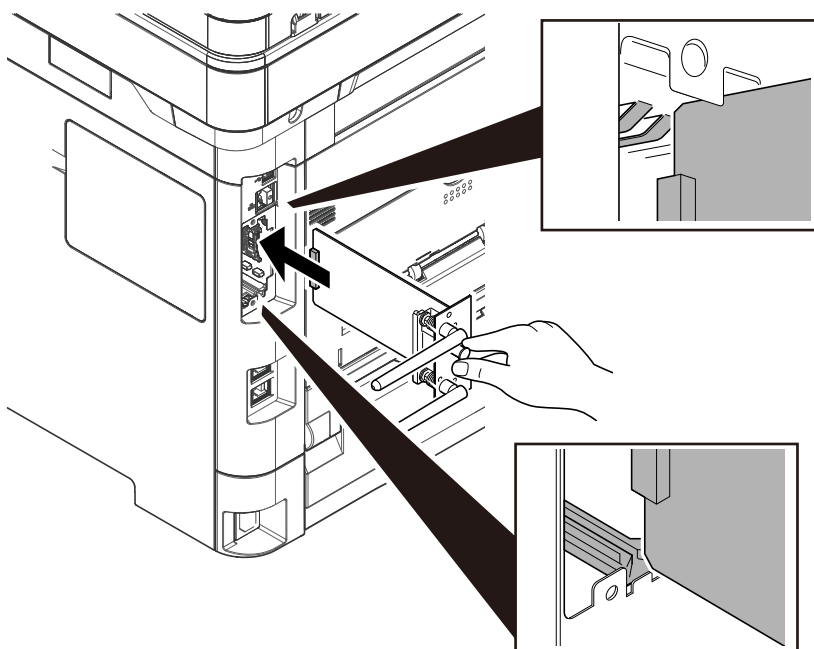
NOTE

Confirm if each indicator is not blinking.

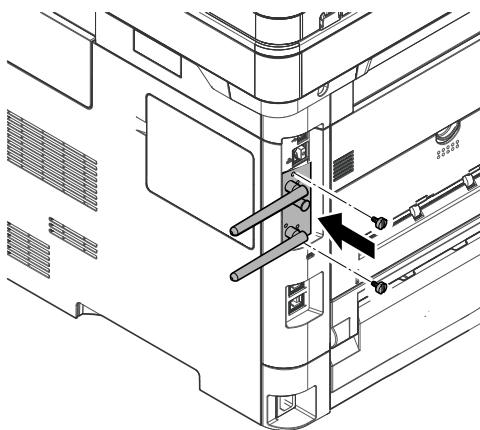
2



3



4

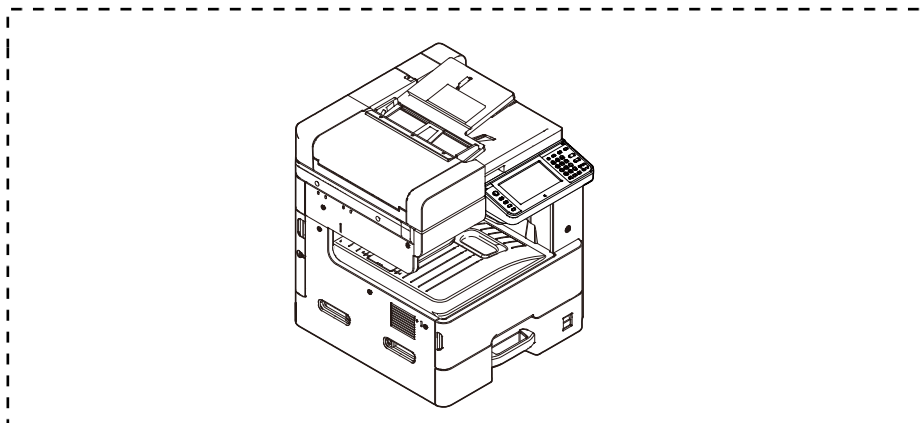


5 Set a password and configure the wireless network.

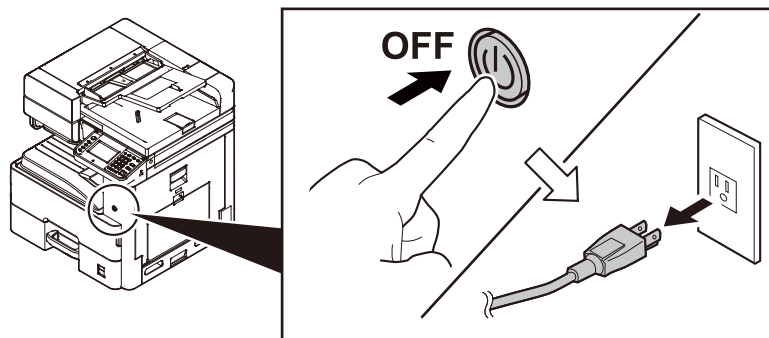
- ➡ [Set a password \(page 27\)](#)
- ➡ [Configuring the Wireless Settings on the IB-54/IB-55's Web Page \(page 29\)](#)

Monochrome A3 Multi functional product

P-2540i MFP



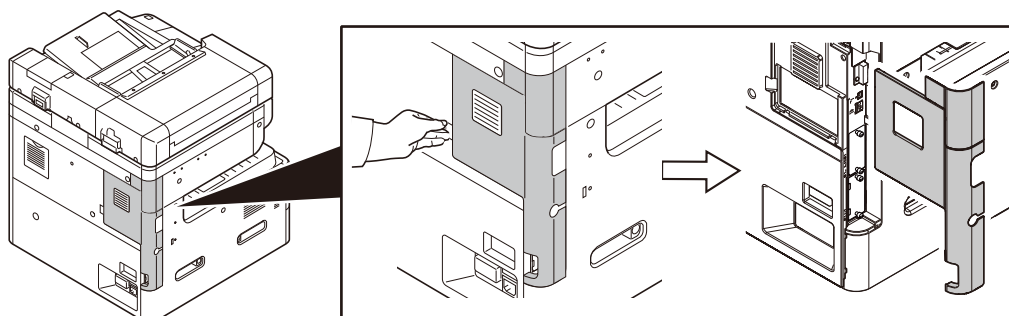
1



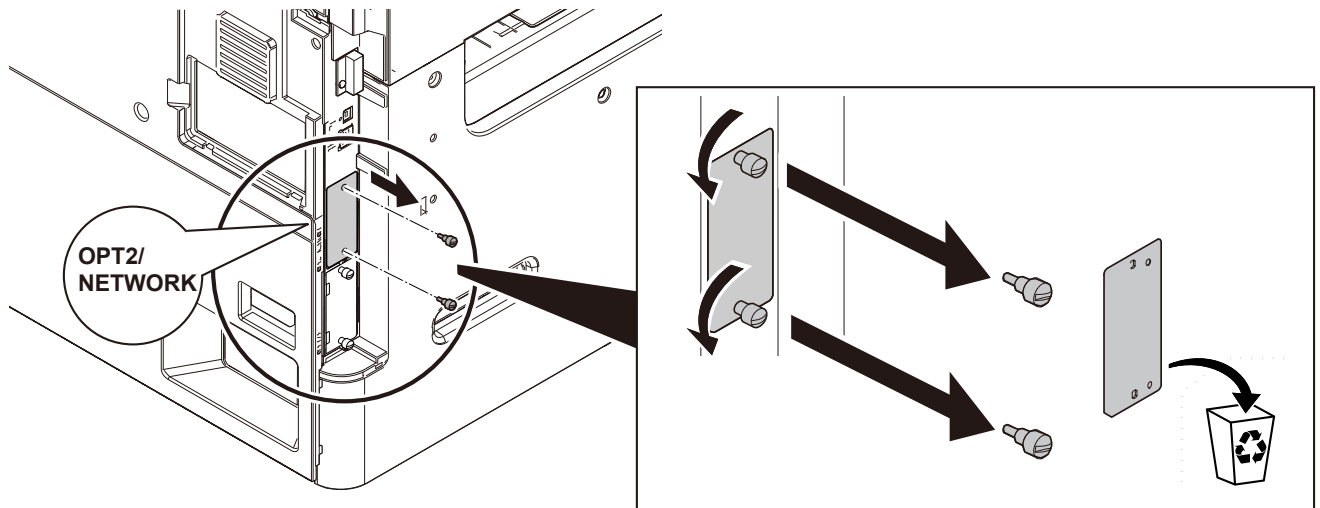
NOTE

Confirm if each indicator is not blinking.

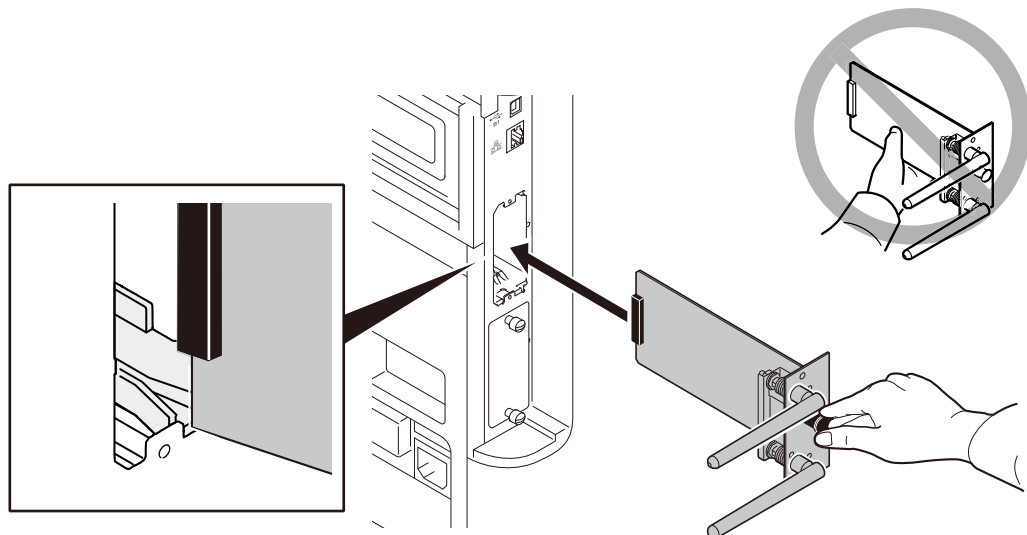
2



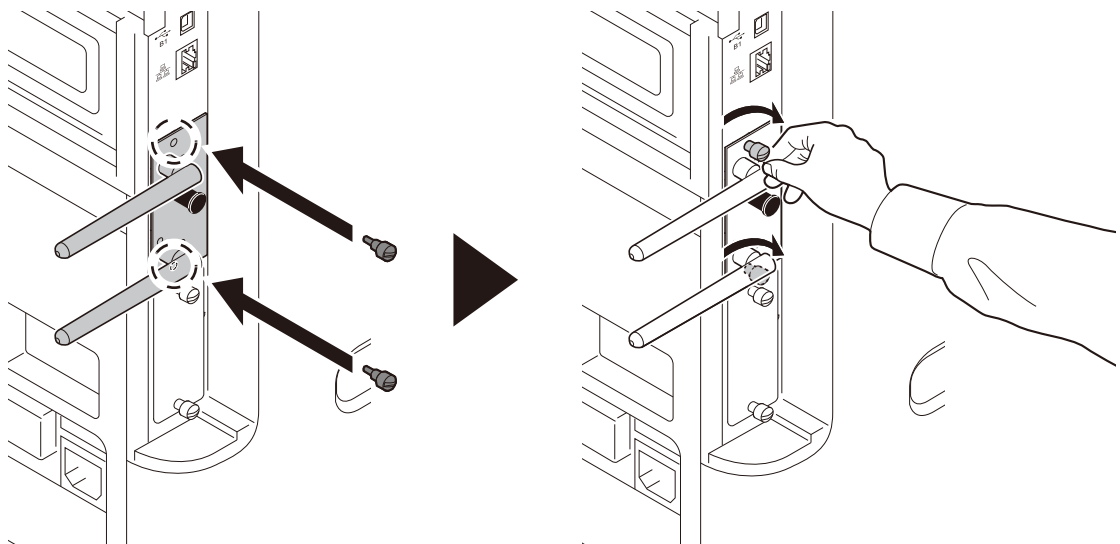
3



4



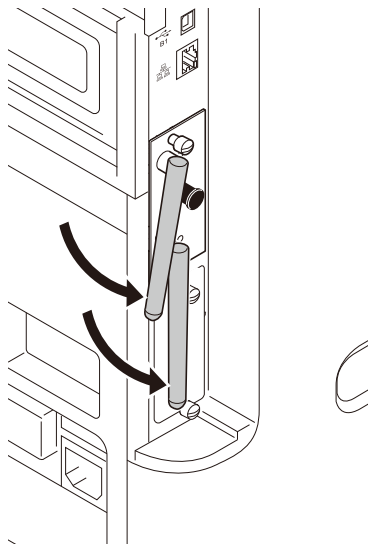
5



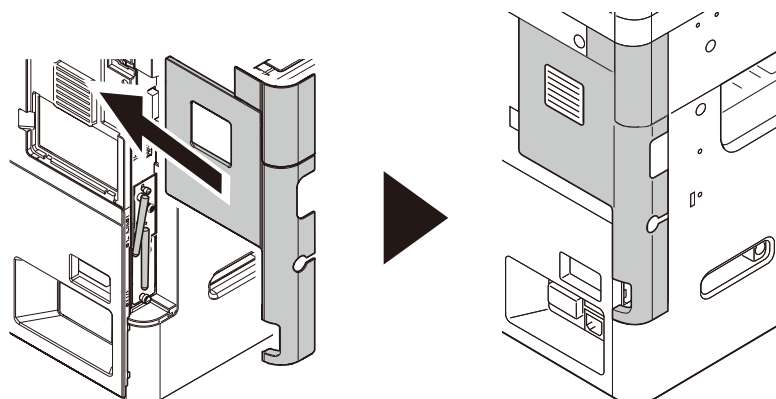
6 Set a password and configure the wireless network.

- ➔ [Set a password \(page 27\)](#)
- ➔ [Configuring the Wireless Settings on the IB-54/IB-55's Web Page \(page 29\)](#)

7

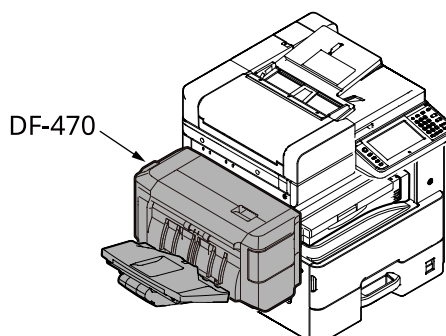


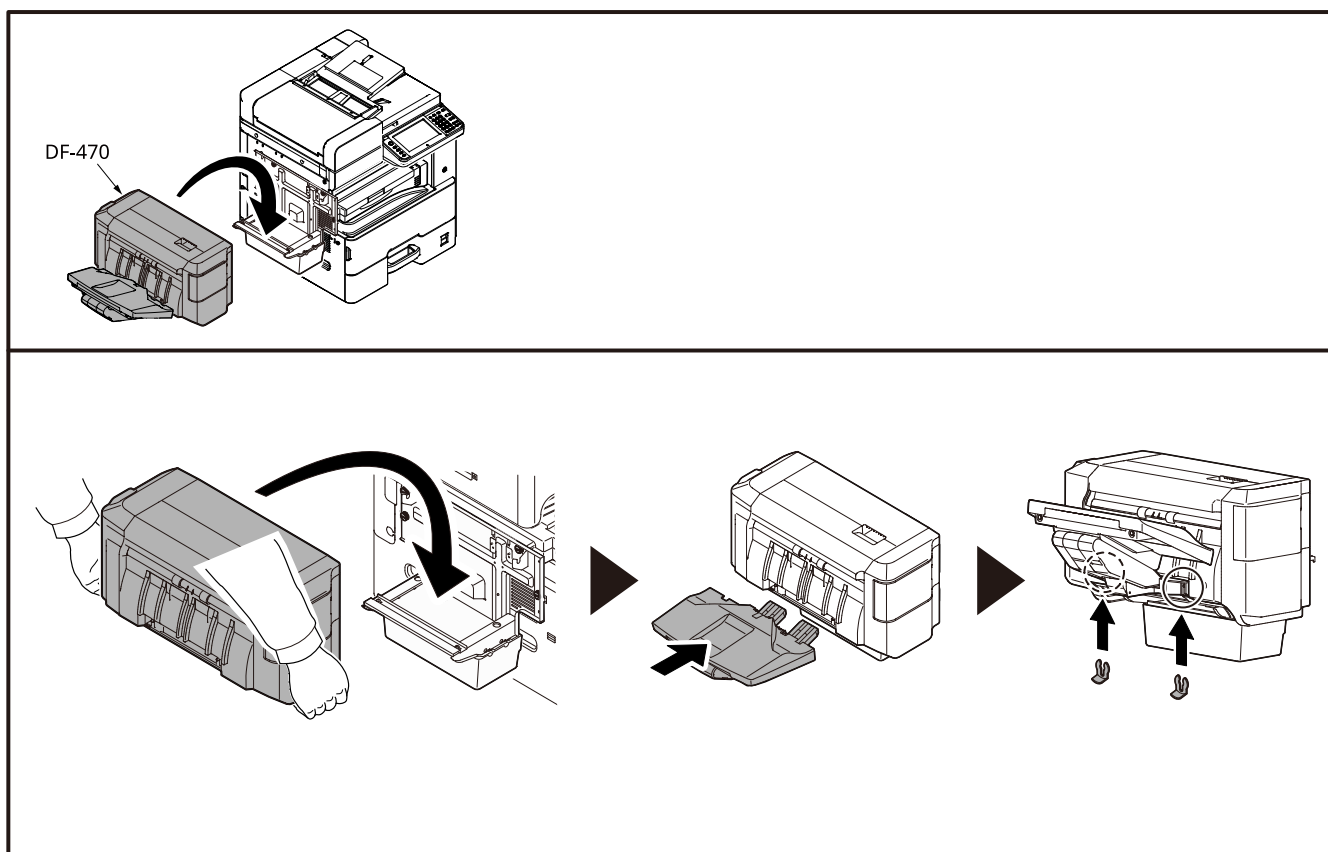
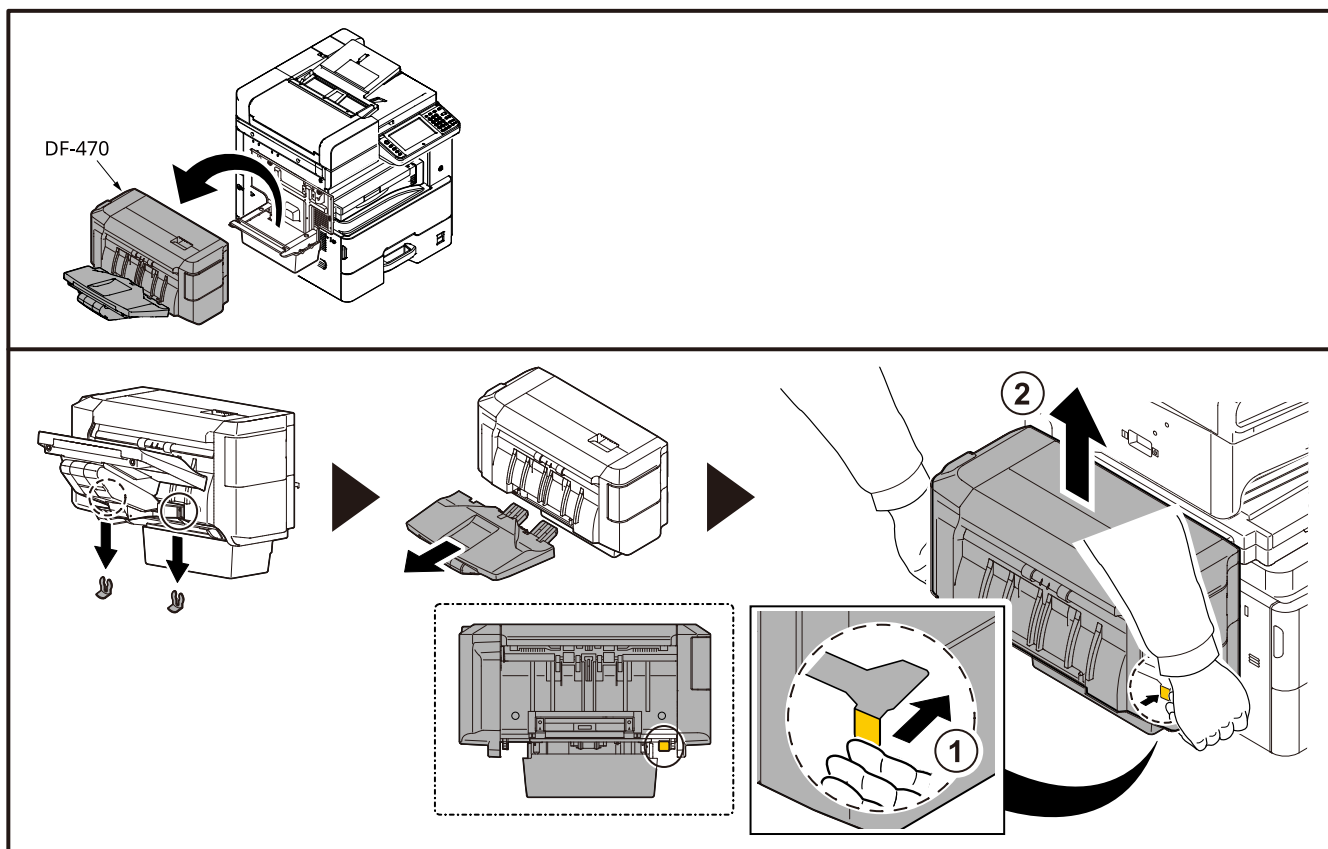
8



NOTE

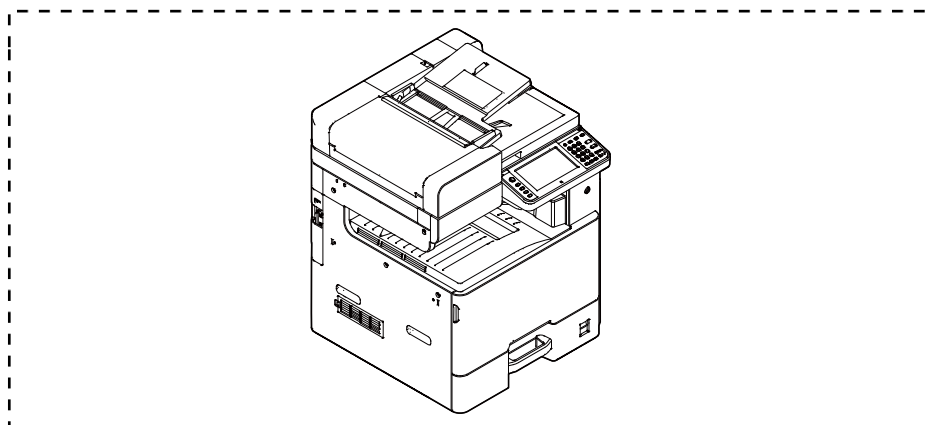
In case if DF-470 is installed, install the main unit after removing DF-470.
Refer to the following for the way of removing/installing DF-470.



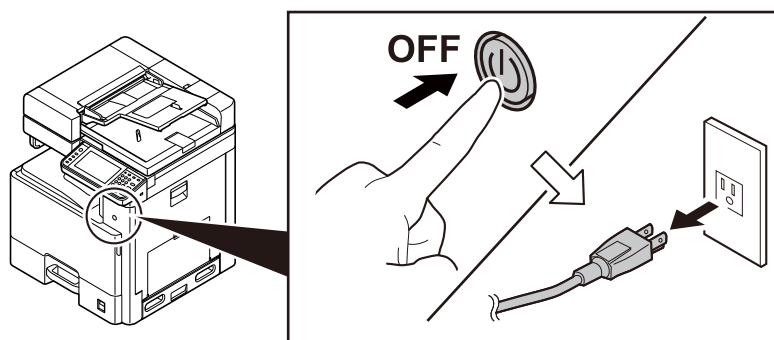


Color A3 Multi functional product

P-C2480i MFP



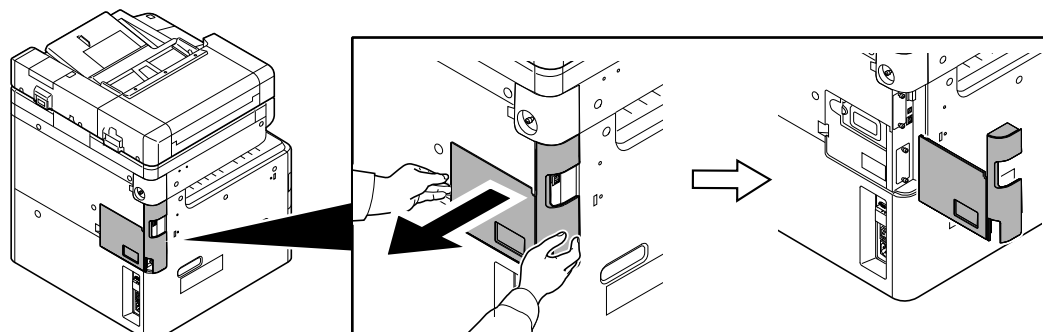
1



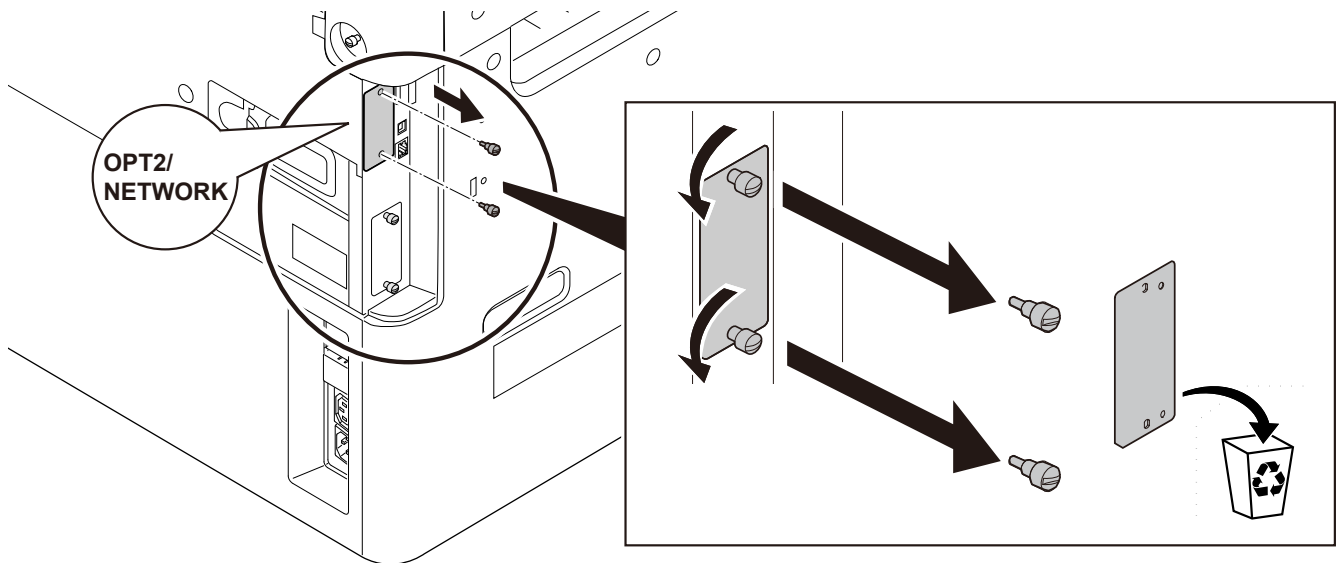
NOTE

Confirm if each indicator is not blinking.

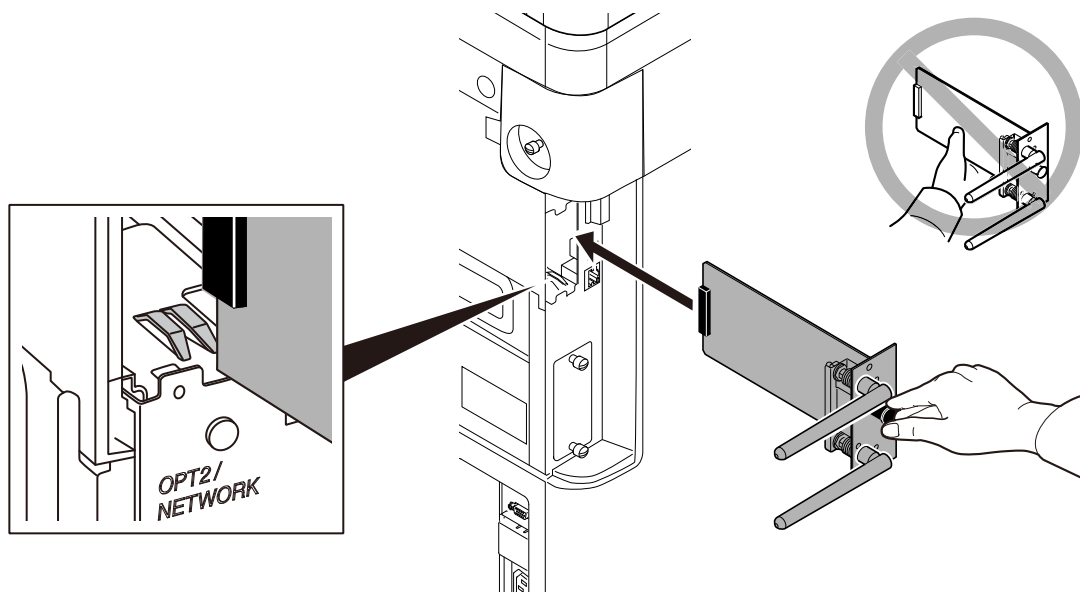
2



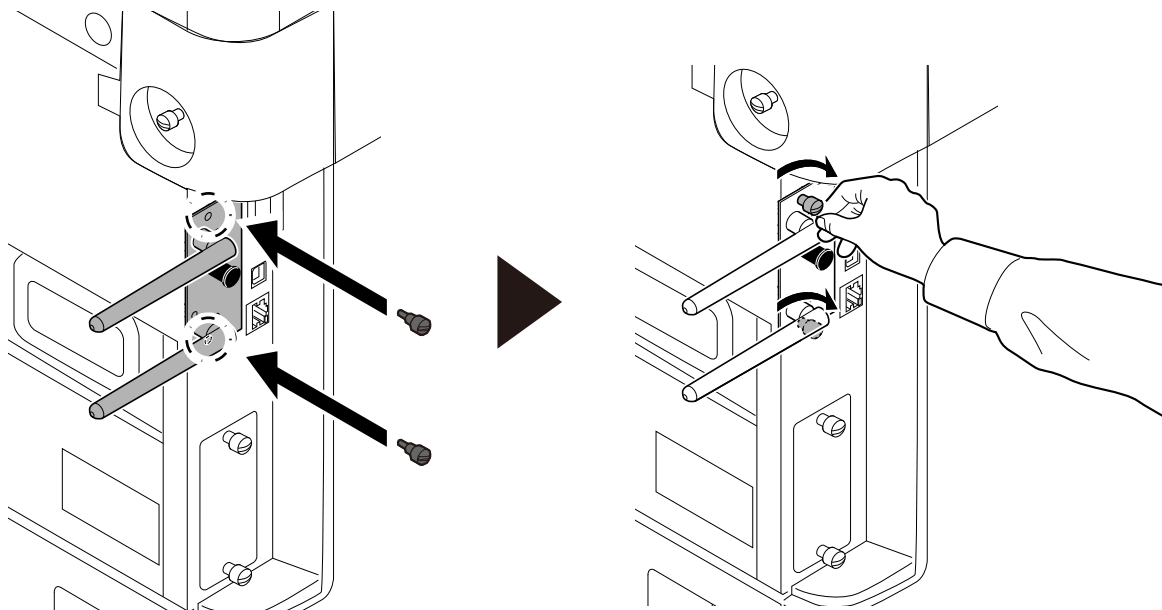
3



4



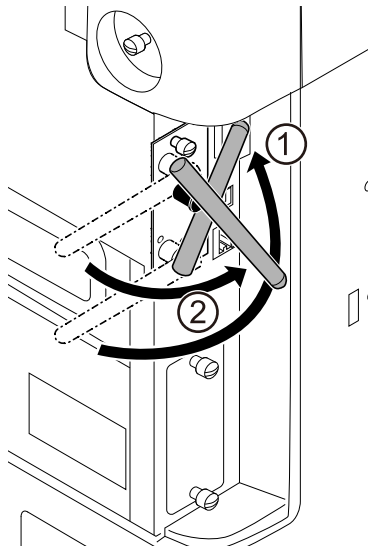
5



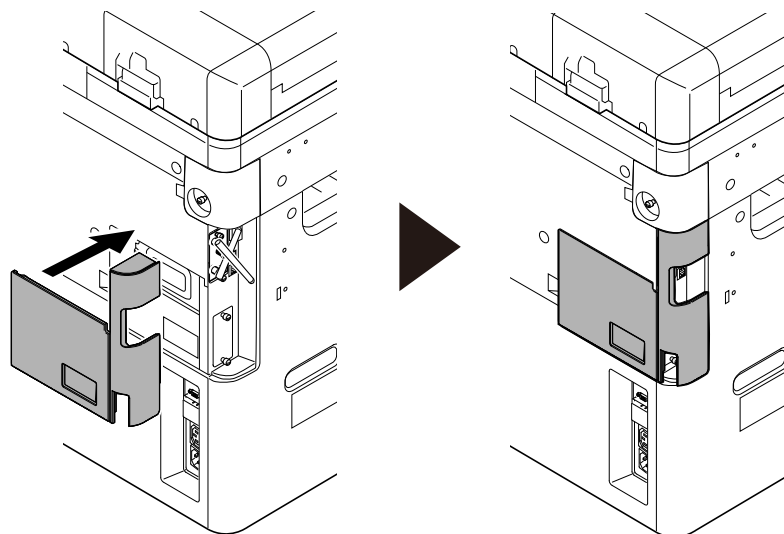
6 Set a password and configure the wireless network.

- ➔ [Set a password \(page 27\)](#)
- ➔ [Configuring the Wireless Settings on the IB-54/IB-55's Web Page \(page 29\)](#)

7

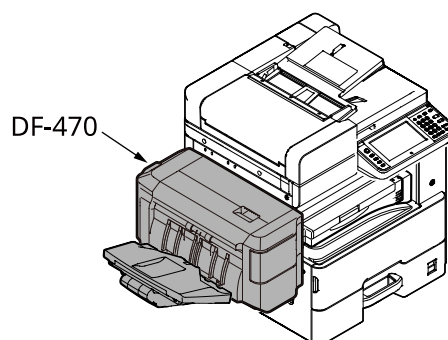


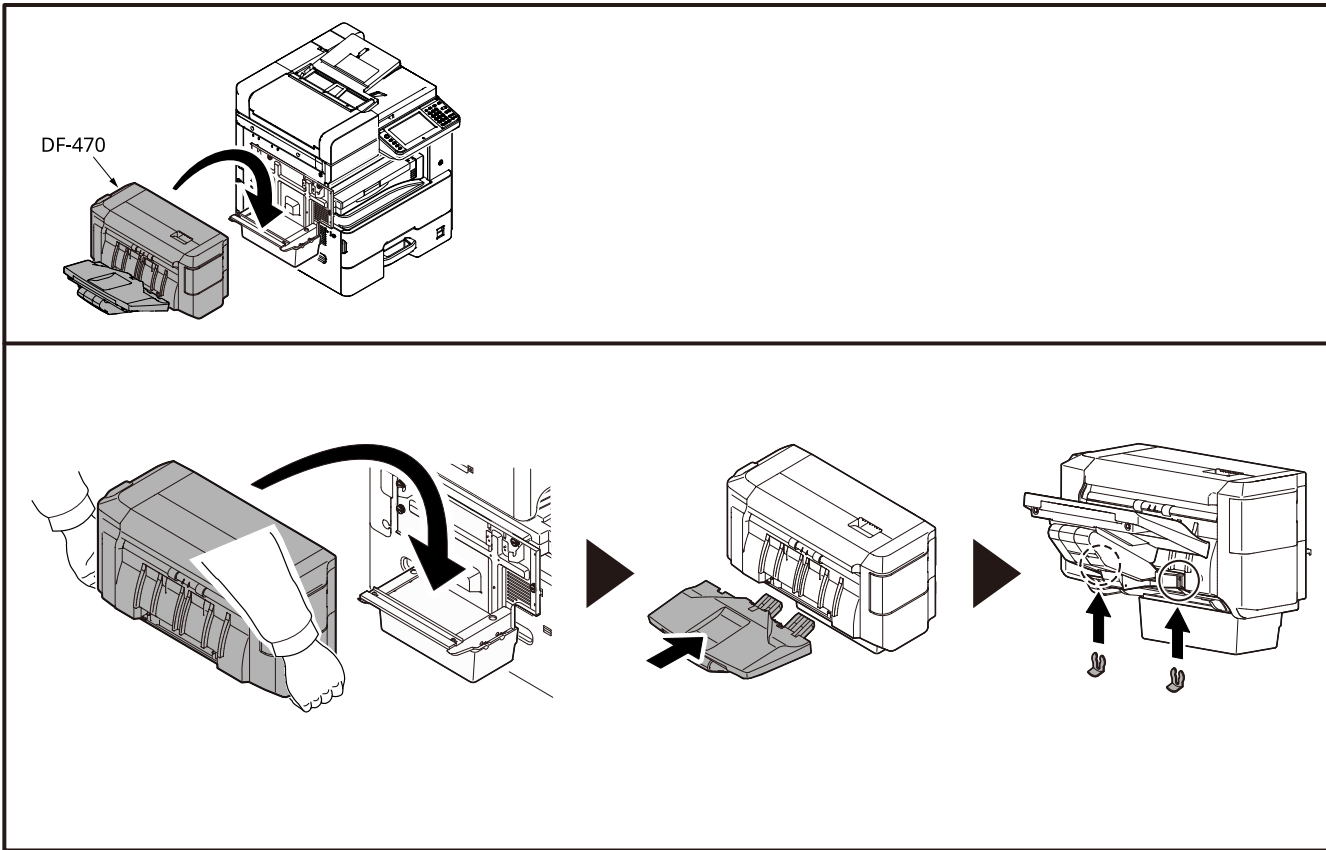
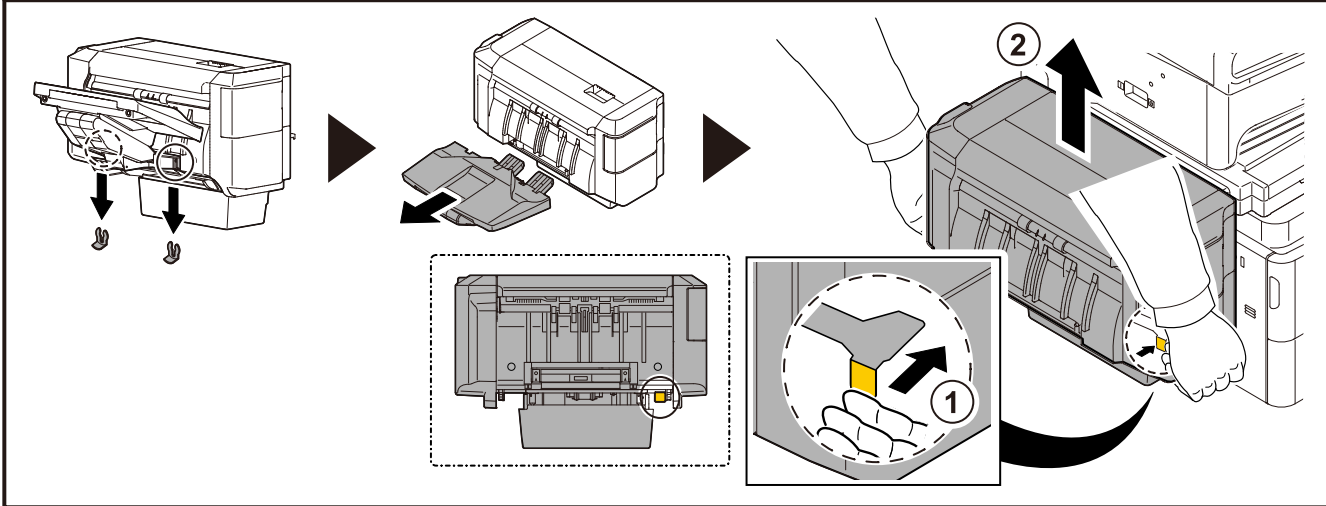
8



NOTE

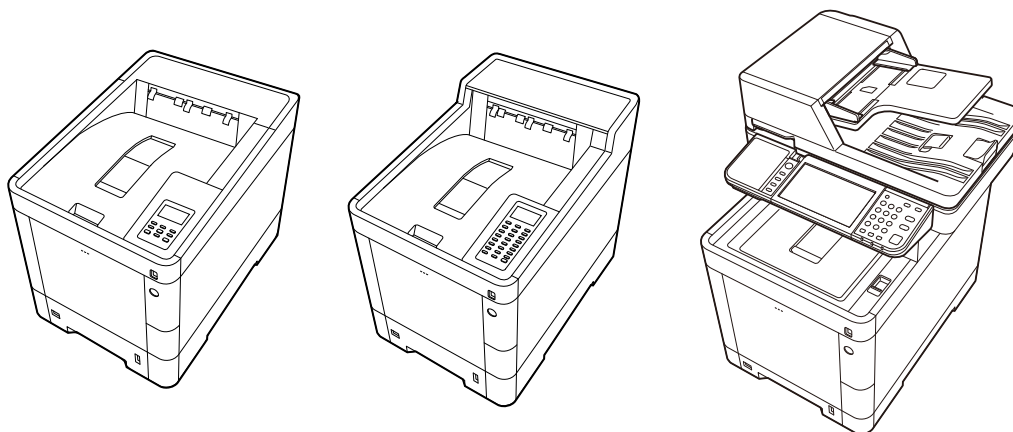
In case if DF-470 is installed, install the main unit after removing DF-470.
Refer to the following for the way of removing/installing DF-470.



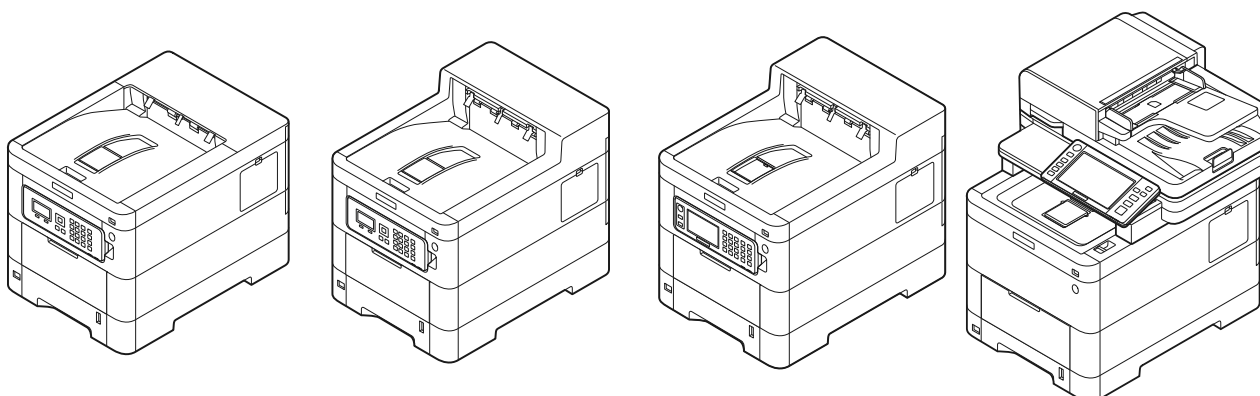


Color A4 Multi functional product/Color A4 printer

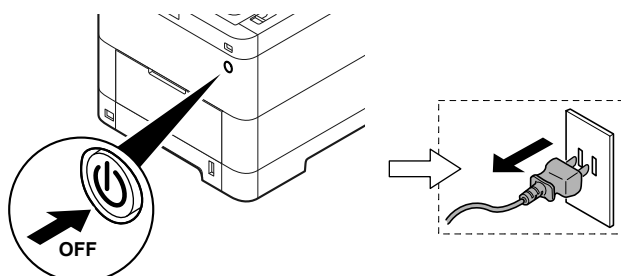
P-C3566i MFP/P-C3562i MFP/P-C3066i MFP/P-C3062i MFP/P-C4072DN/P-C3562DN/P-C3062DN
357ci



458ci/358ci/P-C4067i MFP/P-C4063i MFP/P-C3567i MFP/P-C3563i MFP/P458ci/P-C4063DN/P-C3563DN



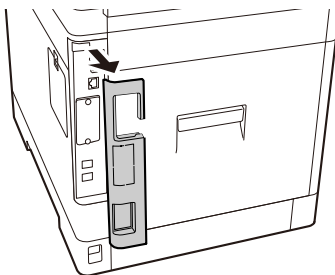
1



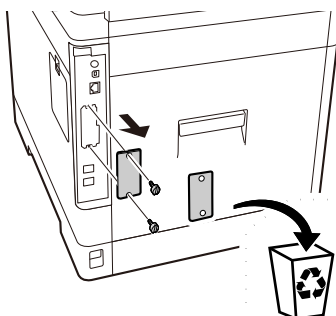
NOTE

Confirm if each indicator is not blinking.

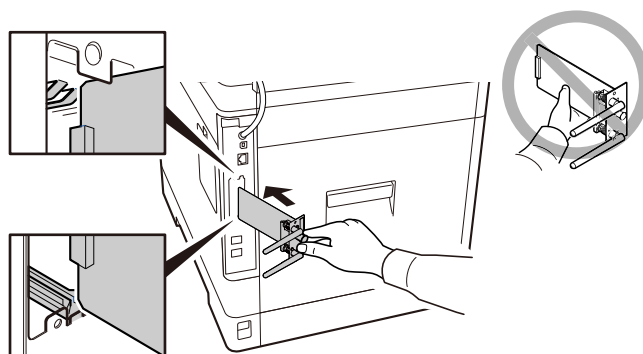
2



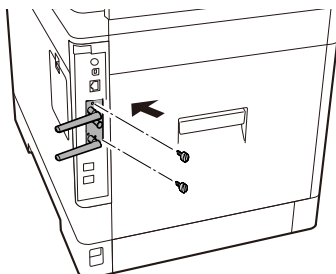
3



4



5

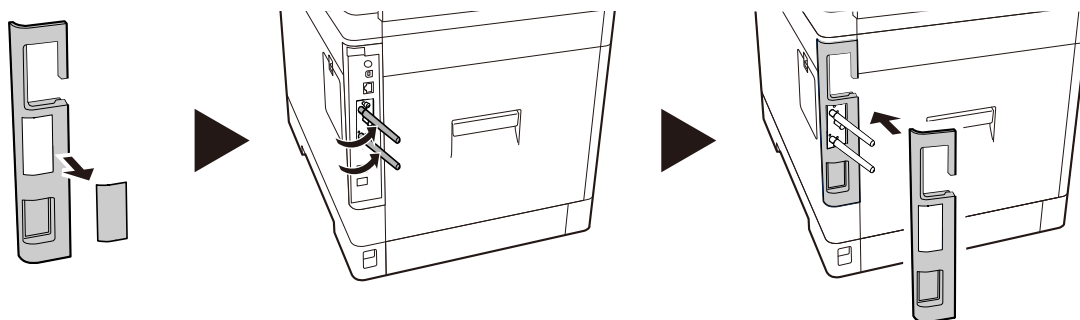


6 Set a password and configure the wireless network.

➔ [Set a password \(page 27\)](#)

➔ [Configuring the Wireless Settings on the IB-54/IB-55's Web Page \(page 29\)](#)

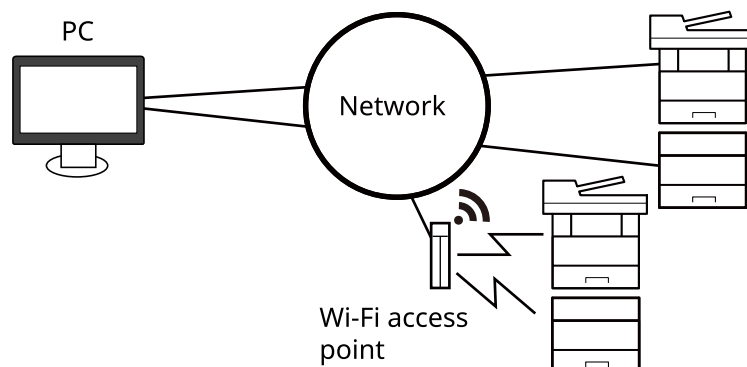
7



3 Setting password and configuring wireless network

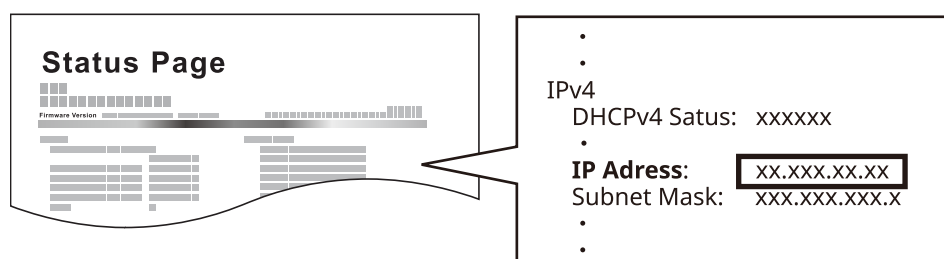
Set a password

- Connect the main unit with the IB-54/IB-55 installed and PC to same network.
- Make it possible to access through network from PC to the main unit.

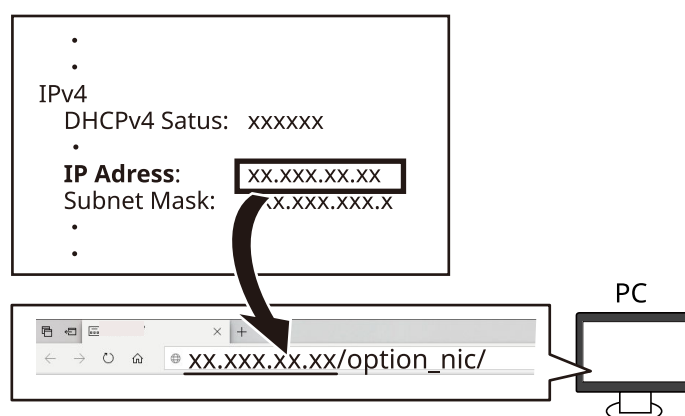


1 Input "[IP address of the main unit]/option_nic/" in the URL column of the PC Web browser.

- 1 Confirming IP address by printing the status page.



- 2 Input "[IP address of the main unit]/option_nic/" in the URL column of the PC Web browser.



NOTE

In case of not using DHCP, set a IP address, etc. by the operation panel manually.

2 Set a password.

Input the administrator password (within 15 letters) excluding “Admin” and click [Submit].

The screenshot displays a web interface for 'Account Setup'. On the left is a sidebar with a 'Select Language' dropdown set to 'English', and expandable sections for 'General Settings' (containing 'Password') and 'Information' (containing 'About'). The main content area is titled 'Account Setup' and includes a sub-tab 'Account Setup'. Below this, a message states: 'The Administrator password controls access to the device configuration.' A section titled 'Administrator Account' contains two input fields: 'New Password :' and 'Confirm New Password :'. These fields are highlighted with a black rectangular box. To the right of the input fields are 'Submit' and 'Cancel' buttons. The interface has a blue header and footer.

Configuring the Wireless Settings on the IB-54/IB-55's Web Page

This page explains how to configure the wireless settings on the IB-54/IB-55's Web page.

NOTE

Refer to the followings to other setting methods.

➔ **IB-54/IB-55 User's Manual: IB-54 SETUP**

IB-54/IB-55 User's Manual can be downloaded from the Download Center.

<https://www.triumph-adler.com/ta-en-de/customer-service/download-centre>

<https://www.utax.com/en-de/hardware/office-printer-and-mfp/download-centre>

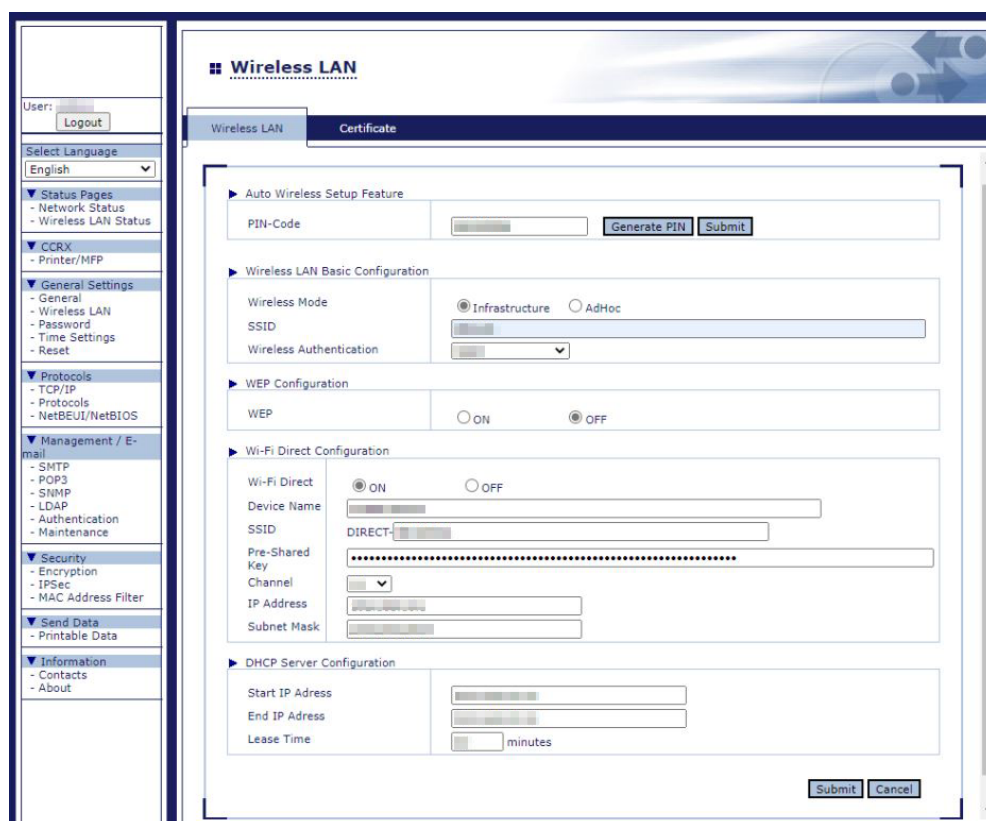
1 Login to the IB-54/IB-55's Web page with administrator privileges.

NOTE

Log in with the newly set administrator password.

➔ [Set a password \(page 27\)](#)

2 From the left menu on the Web page, click General Settings > Wireless LAN.



The screenshot displays the 'Wireless LAN' configuration page. On the left is a sidebar menu with categories like 'Status Pages', 'CCR', 'General Settings', 'Protocols', 'Management / E-mail', 'Security', 'Send Data', and 'Information'. The 'General Settings' section is expanded, and 'Wireless LAN' is selected. The main content area is titled 'Wireless LAN' and contains several configuration sections: 'Auto Wireless Setup Feature' with a 'PIN-Code' field and 'Generate PIN'/'Submit' buttons; 'Wireless LAN Basic Configuration' with 'Wireless Mode' (Infrastructure/AdHoc), 'SSID', and 'Wireless Authentication' options; 'WEP Configuration' with a 'WEP' field and 'ON/OFF' radio buttons; 'Wi-Fi Direct Configuration' with 'Wi-Fi Direct' (ON/OFF), 'Device Name', 'SSID', 'Pre-Shared Key', 'Channel', 'IP Address', and 'Subnet Mask' fields; and 'DHCP Server Configuration' with 'Start IP Address', 'End IP Address', and 'Lease Time' fields. 'Submit' and 'Cancel' buttons are at the bottom right.

3 Complete each field.

The fields are described below.



NOTE


Refer the following for the preparation of network setting.

➔ **IB-54/IB-55 User's Manual:** Necessary Wireless Setting Information

IB-54/IB-55 User's Manual can be downloaded from the Download Center.

<https://www.triumph-adler.com/ta-en-de/customer-service/download-centre>

<https://www.utax.com/en-de/hardware/office-printer-and-mfp/download-centre>

Item	Description	
Auto Wireless Setup Feature	PIN-Code	Clicking Generate PIN will generate the IB-54/IB-55's PIN code.
Wireless LAN Basic Configuration	Wireless Mode	Select from below the method of connection to the IB-54/IB-55's wireless network. Select "Infrastructure" here.
	SSID	Set the SSID of the wireless LAN to connect the IB-54/IB-55.
	Wireless Authentication	<p>Configure the authentication method used when connecting to the wireless LAN router (access point).</p> <ul style="list-style-type: none"> • Open • Shared • WPA-Personal • WPA2-Personal • WPA-Enterprise • WPA2-Enterprise • WPA3-Personal • WPA3-Enterprise <hr/> <p> NOTE</p> <p>On some models, WPA3-Personal/WPA3-Enterprise can only be configured when setting the method from the web page.</p>
WEP Configuration	<p>Configure below when the wireless authentication method is set to Open/Shared. For more details, refer to the following.</p> <p>➔ IB-54/IB-55 User's Manual^{*1}: Configuring the Wireless Settings on the IB-54's Web Page</p>	
Wi-Fi Direct Configuration	<p>The Wi-Fi Direct setting is displayed when the Wireless Mode is set to Infrastructure. For more details, refer to the following.</p> <p>➔ IB-54/IB-55 User's Manual^{*1}: Configuring the Wireless Settings on the IB-54's Web Page</p>	
DHCP server Configuration	<p>The DHCP server settings are displayed when the Wireless Mode is set to Infrastructure and the Wi-Fi Direct setting is enabled [ON]. For more details, refer to the following.</p> <p>➔ IB-54/IB-55 User's Manual^{*1}: Configuring the Wireless Settings on the IB-54's Web Page</p>	

*1: IB-54/IB-55 User's Manual can be downloaded from the Download Center.

<https://www.triumph-adler.com/ta-en-de/customer-service/download-centre>

<https://www.utax.com/en-de/hardware/office-printer-and-mfp/download-centre>

4 Click [Submit] to complete the configuration.